

Presentation Nov 11, 2010

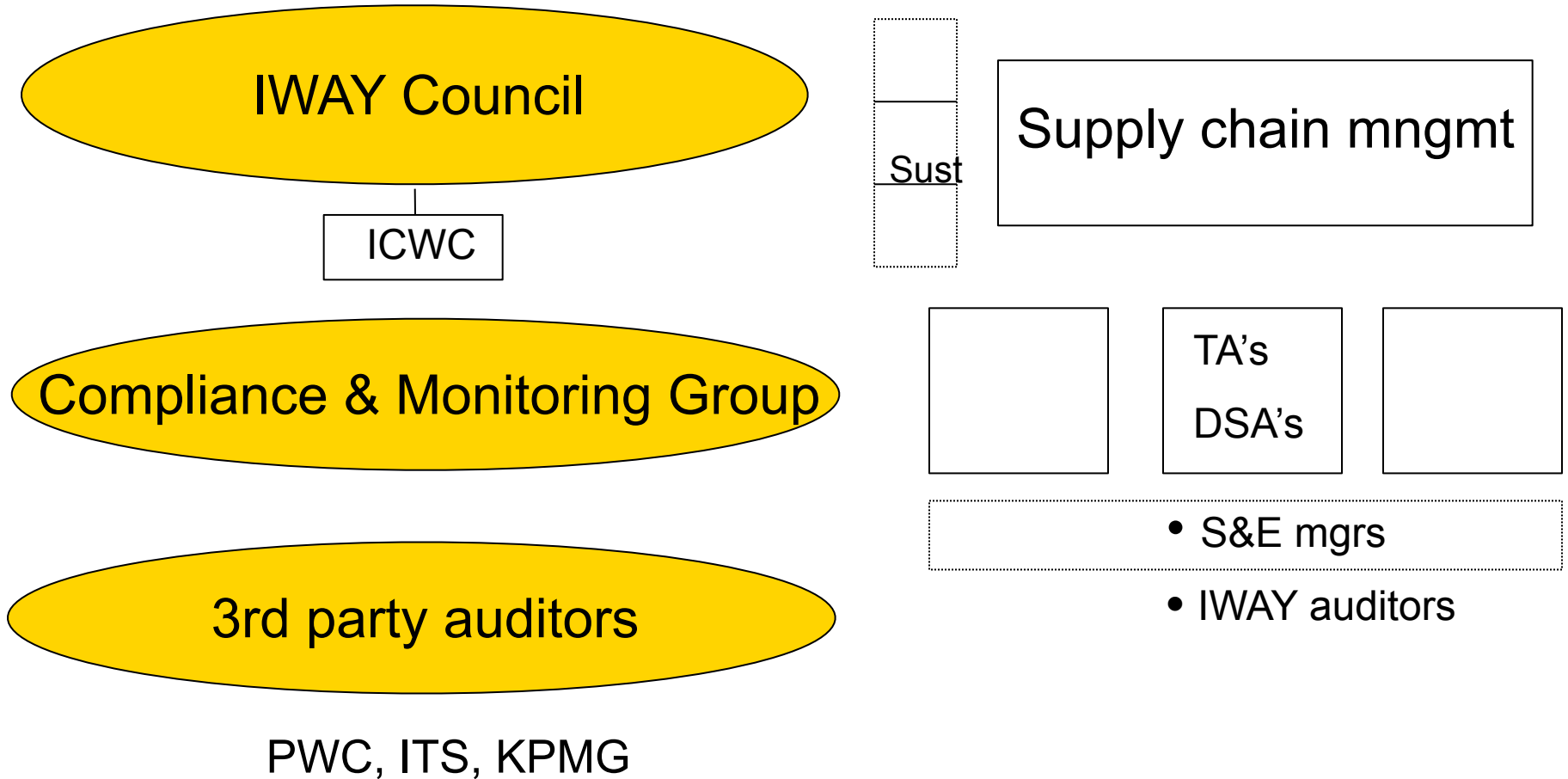


Managing IKEA CoC (IWAY) deviations at suppliers.

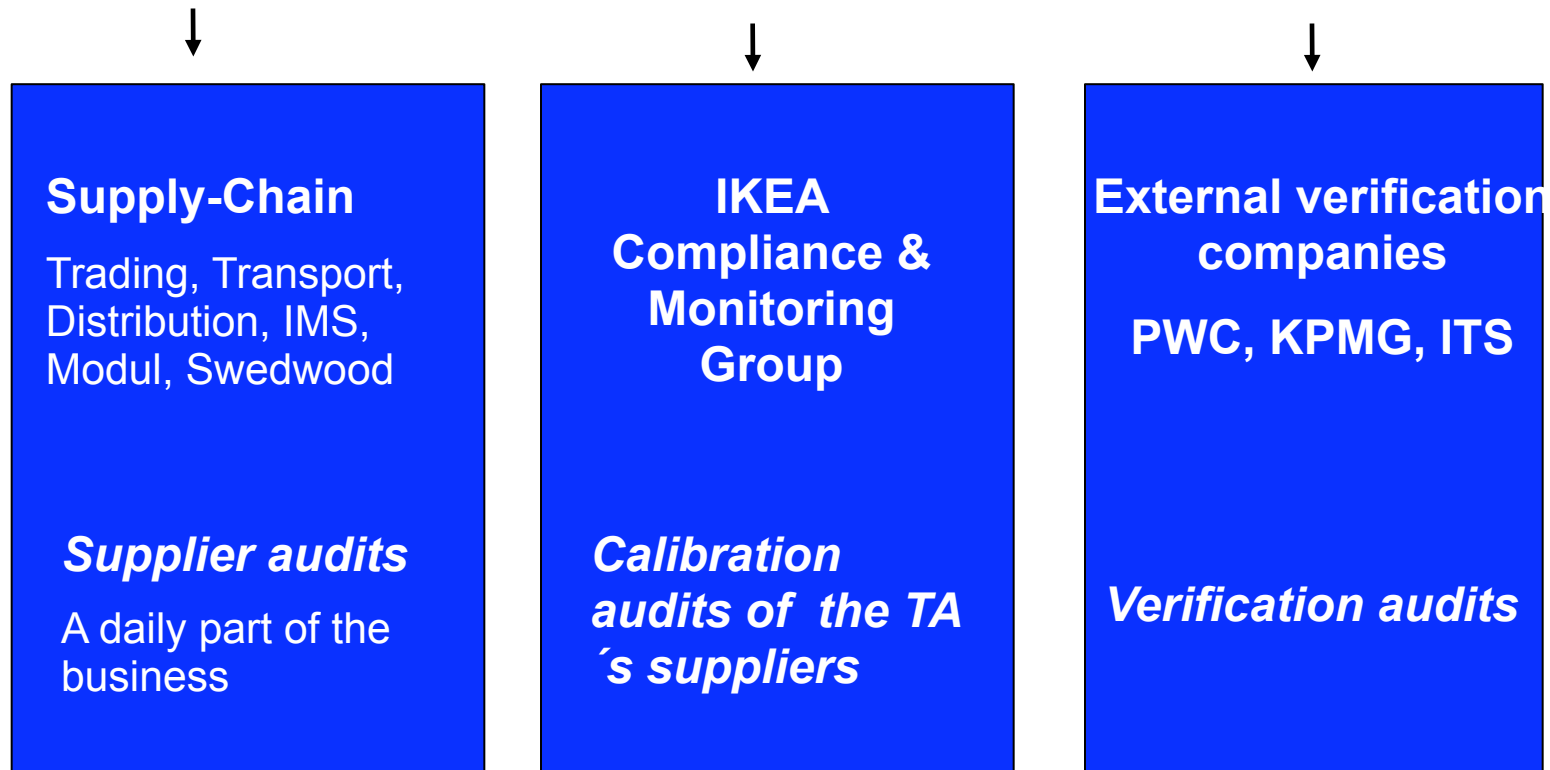
Precondition:

Active work by IKEA together with the supplier at the supplier. _

Our IWAY Organisation



How the audit work is shared



Calibration audits by C.M.G. is always performed together with the Supply-Chain auditor.

Managing deviations 1



Corrective Action Plan

- Audit
- CAP within 2 weeks
Supplier and IKEA Business Team.
- Approval of CAP
IKEA Business Team and auditor
- Actions

Managing deviations 2



Business Consequences

- If "IWAY Must" deviation
 - Stop deliveries, supplier on 6 months probation
 - Final approval by IWAY auditor, or (see slide 3)
- If other deviation
 - 90-days rule (or less)
 - Final approval by IWAY auditor, or (see slide 3)

In the best interest of...

...the child



...the worker



...the environment

